

CERTIFICATE OF LOCATION OF GOVERNMENT CORNER

E 1/4 Corner of Section 13, Township 40, Range 25, 4TH P.M.

STATE OF MINNESOTA, County of KANABEC

At the corner location shown on the sketch:

FND-7/8" x 6' CAPPED REBAR

Kanabec County U.S. Survey Feet Coordinates
NAD 1983, HARN 1996 Adjustment
Obtained by RTK GPS Observation

Northing= 182279.820

Easting= 375490.560

Note: NAD 1983, HARN 1996 Adjustment
coordinates are NOT compatible with
NAD 1983 coordinates

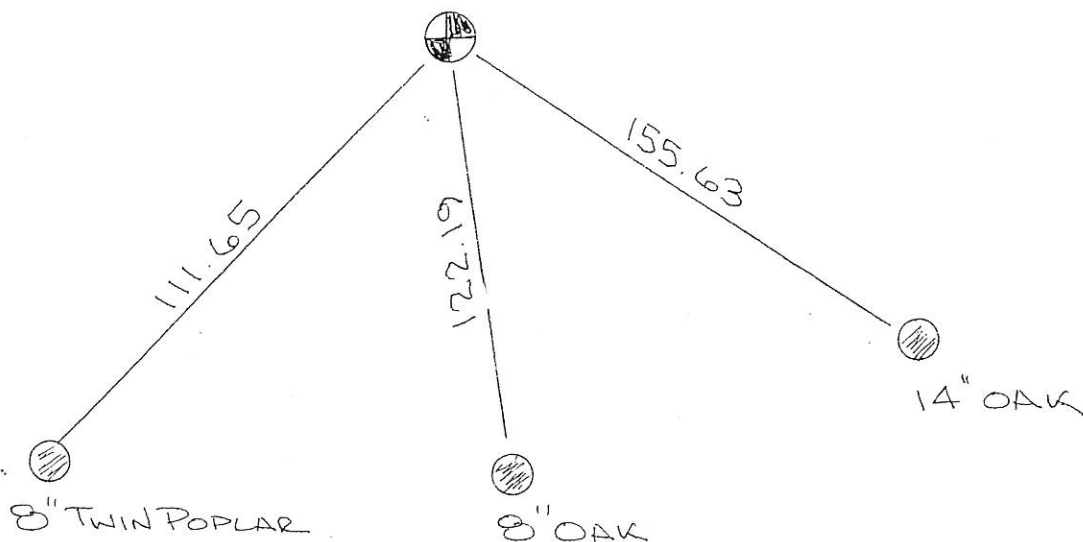
Note: 1 Meter=3937/1200 U.S. Survey Feet

SKETCH OF REFERENCE TIES

TIES FROM SHEET # 860



SWAMP



Statement of evidence relative to this corner location is on back of page.

I hereby certify that this document and the data contained herein was prepared by me or under my direct supervision.

Ernest J. Red
Signature

12-23-13
Date

Registration No. 9808

- Land Surveyor, Professional Engineer
- County Surveyor, County Engineer

OFFICE OF THE COUNTY RECORDER

County of _____

I hereby certify that this document was filed in the County Recorder's office at _____ M. on the

_____ day of _____ A.D., 20____

County Recorder _____

BY _____ Deputy

DOCUMENT NO. _____

From Tie Sheet 860

All of the original government bearing trees are now gone.

In February of 1992, MB Rude made a survey around Section 13, Township 40, Range 25, and into the adjoining sections to locate the existing monuments, lines of occupation and to establish search areas.

They set the northwest corner of Section 18, Township 40, Range 24, on line and proportional distance between the northwest corner of Section 6, Township 40, Range 24, and the west quarter corner of Section 19, Township 40, Range 24.

On November 25, 2013 E.G. Rud and Sons found this monument in the swamp, down 9" below surface. A 6 foot fence post was driven on the southeast edge of monument and another 6 foot post attached to this one. Kanabec County Coordinates were established on this monument.