

# CERTIFICATE OF LOCATION OF GOVERNMENT CORNER

NORTHEAST Corner of Section 2, Township 40, Range 25, 4TH P.M.

STATE OF MINNESOTA, County of KANABEC

At the corner location shown on the sketch:

FOUND THIS CORNER AND ESTABLISHED G.P.S. COORDINATES ON ITS LOCATION.

Kanabec County U.S. Survey Feet Coordinates  
NAD 1983, HARN 1996 Adjustment  
Obtained by RTK GPS Observation

Northing= 192172.17

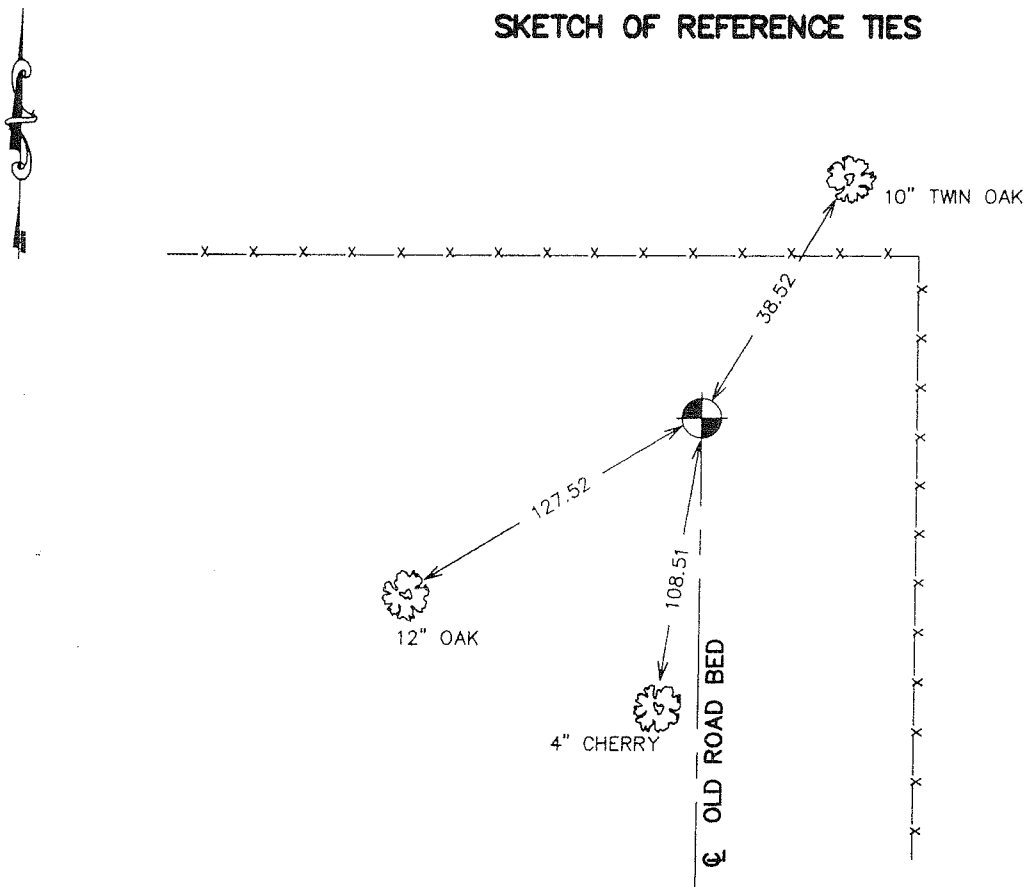
Easting= 370348.53

Note: NAD 1983, HARN 1996 Adjustment coordinates are NOT compatible with NAD 1983 coordinates

Note: 1 Meter=3937/1200 U.S. Survey Feet

## SKETCH OF REFERENCE TIES

TIES ARE TO A SPK. IN BLAZE IN NEAR FACE



Statement of evidence relative to this corner location is on back of page.

I hereby certify that this document and the data contained herein was prepared by me or under my direct supervision.

*Ernest Rud*  
Signature

10-12-2006  
Date

Registration No. *Miss No 9808*

Land Surveyor,  Professional Engineer

County Surveyor,  County Engineer

## OFFICE OF THE COUNTY RECORDER

County of \_\_\_\_\_

I hereby certify that this document was filed in the County Recorder's office at \_\_\_\_\_ M. on the

\_\_\_\_\_ day of \_\_\_\_\_ A.D., 20 \_\_\_\_\_

County Recorder \_\_\_\_\_

BY \_\_\_\_\_ Deputy

DOCUMENT NO. \_\_\_\_\_

## NORTHEAST CORNER SECTION 2, T40, R25

### **STATEMENT OF EVIDENCE**

ALL OF THE ORIGINAL BEARING TREES ARE NOW GONE.

THERE IS A TOWN ROAD ORDER ON FILE FOR A TOWN ROAD STARTING AT THE NORTHWEST CORNER OF SECTION 2 AND RUNNING EAST ON THE TOWNSHIP LINE TO THE NORTHEAST CORNER OF SECTION 1, DATED 1983. TESTIMONY OF THE AREA RESIDENTS SAY THIS ROAD WAS NEVER BUILT, BUT WAS CLEARED BY W.P.A. CREWS IN 1939 AND 1940. THERE IS EVIDENCE OF AN OLD NORTH-SOUTH ROAD SOUTH OF THIS CORNER.

IN JULY OF 1981, M.B. RUDE RAN A SURVEY ALONG THE TOWNSHIP LINE FROM THE SOUTHEAST CORNER OF SECTION 33 TO THE SOUTHWEST CORNER OF SECTION 31.

M.B. RUDE SET THIS CORNER ON THE TOWNSHIP LINE BETWEEN THE SOUTHWEST CORNER OF SECTION 32 AND THE SOUTH QUARTER CORNER OF SECTION 32 AND ON THE NORTHERLY EXTENSION OF THE OLD ROAD BED SOUTH.

IN FEBRUARY 2006 E.G. RUD RAN A SURVEY ALONG THIS CORRECTION LINE AND ESTABLISHED KANABEC COUNTY COORDINATES ON THIS POSITION USING G.P.S. EQUIPMENT.