

# CERTIFICATE OF LOCATION OF GOVERNMENT CORNER

NORTHEAST Corner of Section 34, Township 40, Range 25, 4TH P.M.

STATE OF MINNESOTA, County of KANABEC

At the corner location shown on the sketch:  
FOUND THIS MONUMENT  
AND ESTABLISHED G.P.S. COORDINATES ON ITS LOCATION.

Kanabec County U.S. Survey Feet Coordinates  
NAD 1983, HARN 1996 Adjustment  
Obtained by RTK GPS Observation

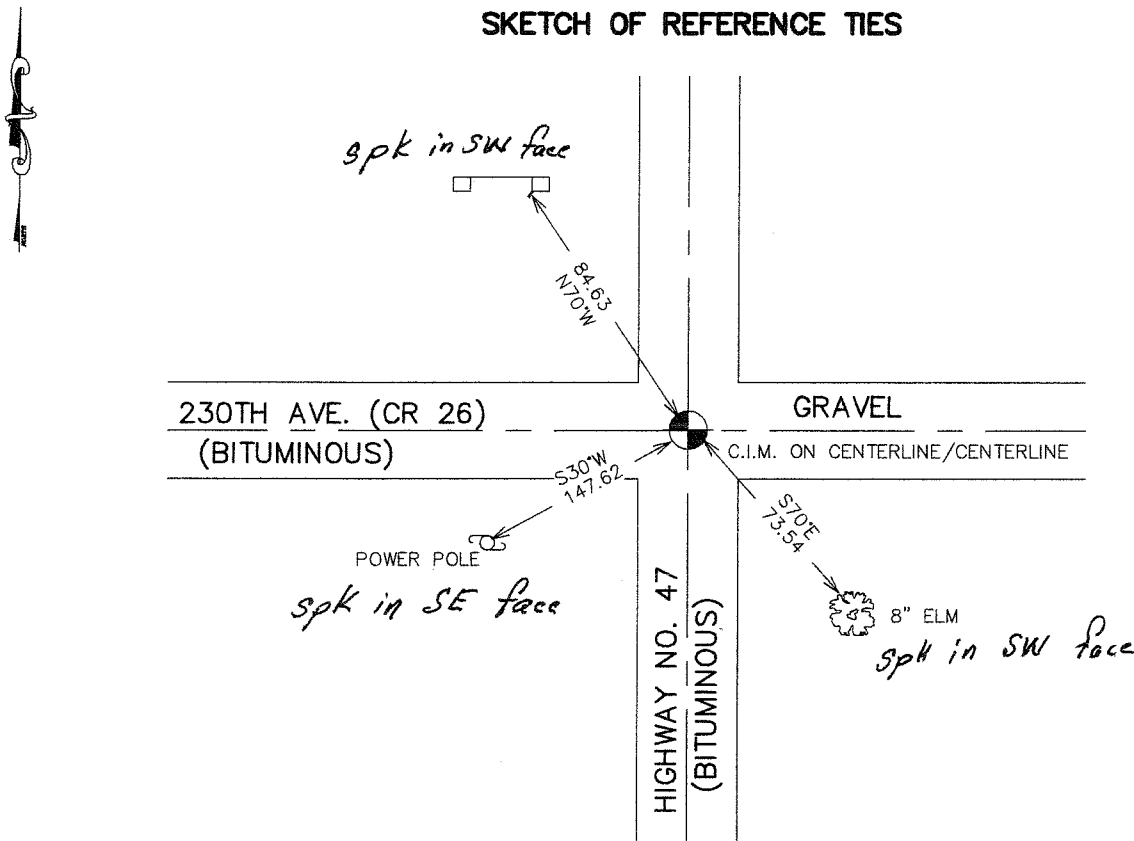
Northing= 169606.270

Easting= 364459.20

Note: NAD 1983, HARN 1996 Adjustment  
coordinates are NOT compatible with  
NAD 1983 coordinates

Note: 1 Meter=3937/1200 U.S. Survey Feet

## SKETCH OF REFERENCE TIES



Statement of evidence relative to this corner location is on back of page.

I hereby certify that this document and the data contained herein was prepared by me or under my direct supervision.

*[Signature]*  
Signature

3-24-2007  
Date

### OFFICE OF THE COUNTY RECORDER

County of \_\_\_\_\_

I hereby certify that this document was filed in the County Recorder's office at \_\_\_\_\_ M. on the \_\_\_\_\_ day of \_\_\_\_\_ A.D., 20\_\_\_\_

County Recorder \_\_\_\_\_

BY \_\_\_\_\_ Deputy

DOCUMENT NO. \_\_\_\_\_

Registration No. Minn No 9808

Land Surveyor,  Professional Engineer

County Surveyor,  County Engineer

NORTHEAST CORNER SECTION 34, T40, R25

**STATEMENT OF EVIDENCE**

THE ORIGINAL CORNER WAS SET BY DEPUTY SURVEYOR SILAS BARNARD ON OCT. 30, 1855 AND FOUR BEARING TREES ESTABLISHED. NO VISIBLE EVIDENCE FOR THE CORNER OR BEARING TREES REMAIN.

THIS CORNER FALLS ON THE CENTERLINE OF STATE HIGHWAY 47 AND CENTERLINE OF COUNTY ROAD 26 RUNNING WEST.

J.B. VICKEREY RAN A ROAD SURVEY FROM THE NORTHEAST CORNER OF SECTION 34 TO THE SOUTHEAST CORNER OF SECTION 35 AS RECORDED ON PAGE 44 IN 1ST BOOK OF SURVEY BOOK NO. 2. HE DOESN'T STATE IF ANY CORNER WERE SET OR FOUND.

IN MAY 2003 E.G. RUD AND SONS FOUND A C.I.M. AT THE CORNER AND ESTABLISHED KANABEC COUNTY COORDINATES ON THIS MONUMENT.

IN FEBRUARY 2007 THIS CORNER POSITION WAS CHECKED AGAIN AND NEW TIES TAKEN.