

CERTIFICATE OF LOCATION OF GOVERNMENT CORNER

EAST QUARTER Corner of Section 27, Township 40, Range 25, 4TH P.M.

STATE OF MINNESOTA, County of KANABEC

At the corner location shown on the sketch:

FOUND THIS MONUMENT
AND ESTABLISHED G.P.S. COORDINATES ON ITS LOCATION.

Kanabec County U.S. Survey Feet Coordinates
NAD 1983, HARN 1996 Adjustment
Obtained by RTK GPS Observation

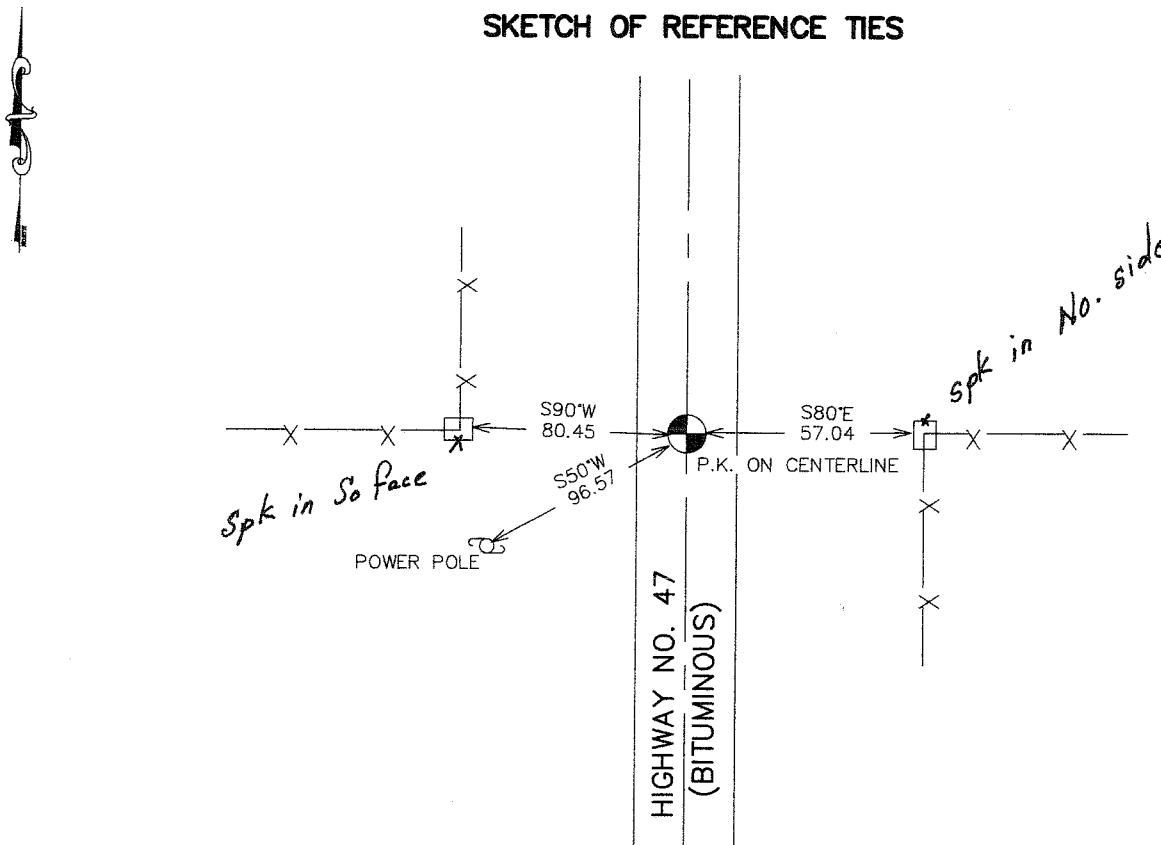
Northing= 172231.528

Easting= 364560.234

Note: NAD 1983, HARN 1996 Adjustment
coordinates are NOT compatible with
NAD 1983 coordinates

Note: 1 Meter=3937/1200 U.S. Survey Feet

SKETCH OF REFERENCE TIES



Statement of evidence relative to this corner location is on back of page.

I hereby certify that this document and the data contained herein was prepared by me or under my direct supervision.

Ernest J. Reed 3-24-2007
Signature Date

Registration No. Minn No 9808

Land Surveyor, Professional Engineer

County Surveyor, County Engineer

OFFICE OF THE COUNTY RECORDER

County of _____

I hereby certify that this document was filed in the County Recorder's office at _____ M. on the _____ day of _____ A.D., 20____

County Recorder _____

BY _____ Deputy

DOCUMENT NO. _____

EAST QUARTER CORNER SECTION 27, T40, R25

STATEMENT OF EVIDENCE

THIS CORNER WAS SET BY DEPUTY SURVEYOR SILAS BARNARD ON OCTOBER 30, 1855 AND TWO BEARING TREES ESTABLISHED. NO EVIDENCE FOR THE CORNER OR BEARING TREES REMAIN.

THIS CORNER FALLS ON THE CENTERLINE OF STATE HIGHWAY NO. 47 AND A FENCE LINE RUNNING EAST.

ON THE MINNESOTA HIGHWAY DEPARTMENT RIGHT OF WAY MAP FOR TRUNK HIGHWAY 47 THE STATE SHOWS A WOOD HUB IN PLACE AT THIS CORNER ON THE CENTERLINE OF 47 AND A FENCE RUNNING EAST.

THE STATE SHOWS A DISTANCE OF 2626.3 TO THE SOUTHEAST CORNER AND 2633.3 TO THE NORTHEAST CORNER. E.G. RUD AND SONS MEASURED 2627.2 AND 2631.2 RESPECTIVELY FROM THE CORNER WE SET IN 2003.

IN MAY 2003 E.G. RUD AND SONS FOUND A REFERENCE MONUMENT SET BY MINNESOTA HIGHWAY DEPARTMENT AND RESET THIS CORNER AND ESTABLISHED KANABEC COUNTY COORDINATES USING G.P.S. EQUIPMENT.

IN FEBRUARY 2007 THE POSITION ON THIS CORNER WAS AGAIN CHECKED AND NEW TIES TAKEN.