

CERTIFICATE OF LOCATION OF GOVERNMENT CORNER

EAST QUARTER Corner of Section 22, Township 40, Range 25, 4TH P.M.

STATE OF MINNESOTA, County of KANABEC

At the corner location shown on the sketch:

FOUND THIS MONUMENT
AND ESTABLISHED G.P.S. COORDINATES ON ITS LOCATION.

Kanabec County U.S. Survey Feet Coordinates
NAD 1983, HARN 1996 Adjustment
Obtained by RTK GPS Observation

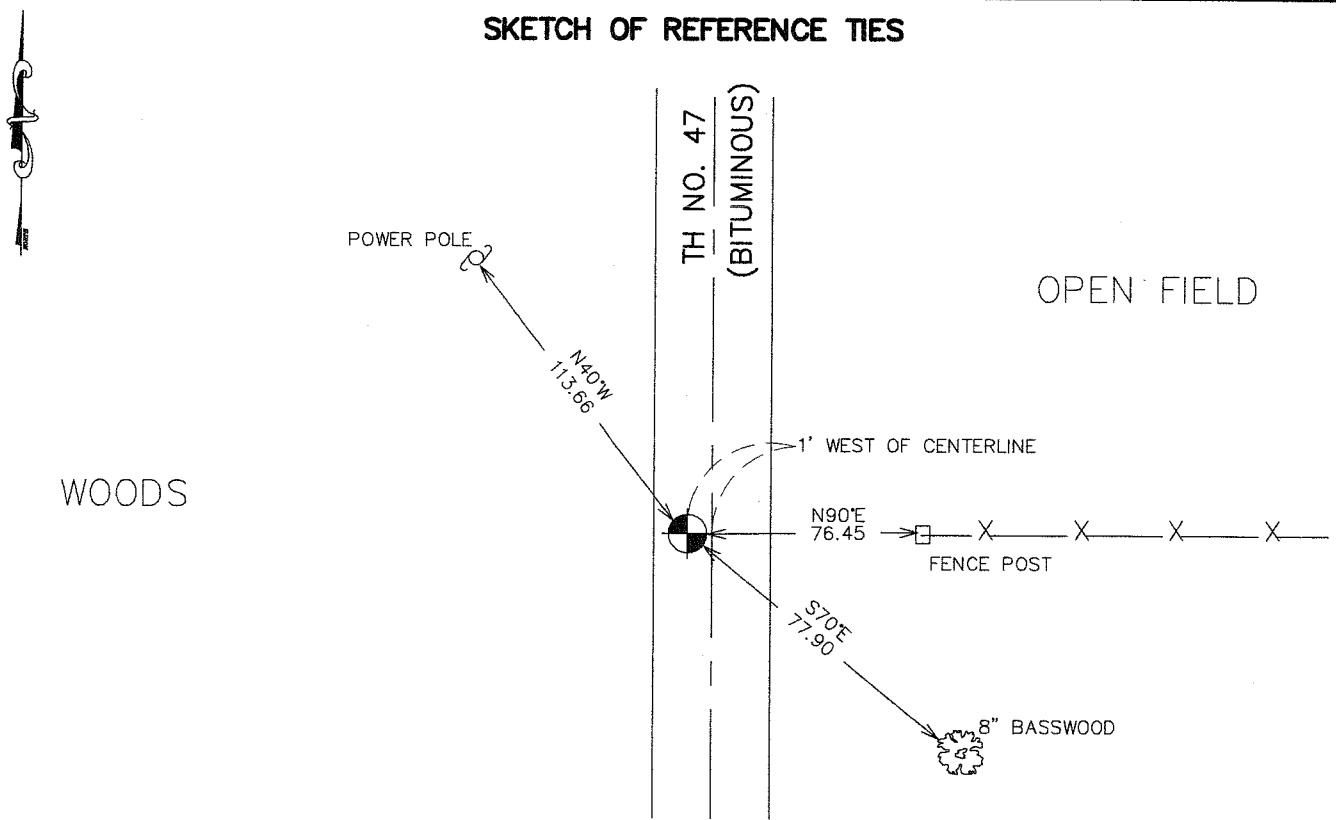
Northing= 177420.648

Easting= 364732.405

Note: NAD 1983, HARN 1996 Adjustment
coordinates are NOT compatible with
NAD 1983 coordinates

Note: 1 Meter=3937/1200 U.S. Survey Feet

SKETCH OF REFERENCE TIES



Statement of evidence relative to this corner location is on back of page.

I hereby certify that this document and the data contained herein was prepared by me or under my direct supervision.

Ernest J. Reed 3-19-2007
Signature Date

Registration No. Minn No. 9808

- Land Surveyor, Professional Engineer
- County Surveyor, County Engineer

OFFICE OF THE COUNTY RECORDER

County of _____

I hereby certify that this document was filed in the County Recorder's office at _____ M. on the

_____ day of _____ A.D., 20__

County Recorder _____

BY _____ Deputy

DOCUMENT NO. _____

EAST QUARTER CORNER SECTION 22, T40, R25

STATEMENT OF EVIDENCE

THE ORIGINAL CORNER WAS SET BY DEPUTY SURVEYOR, SILAS BARNARD IN OCTOBER 30, 1855 AND TWO BEARING TREES ESTABLISHED. NO EVIDENCE TO THE CORNER OR BEARING TREES REMAIN.

THIS CORNER FALLS ON THE CENTERLINE OF ~~THE CENTERLINE OF~~ STATE HIGHWAY NO. 47 AND A FENCE LINE RUNNING EAST.

NO ROAD OPENINGS COULD BE FOUND AT THE COUNTY AUDITORS OFFICE.

NO RECORDS OF ANY SUBSEQUENT SURVEYS COULD BE FOUND AT THE COUNTY HIGHWAY DEPARTMENT.

THE MINNESOTA HIGHWAY DEPARTMENT RIGHT OF WAY MAPS SHOWS A FIELD STONE ON THE CENTERLINE OF HIGHWAY AND IN LINE WITH A FENCE RUNNING EAST AND WEST.

IN MAY 2003 E.G. RUD FOUND A PIN IN THE CENTERLINE OF HIGHWAY NO. 47 AT THE FENCE LOCATION. KANABEC COUNTY COORDINATES WERE ESTABLISHED USING G.P.S. EQUIPMENT.

PRIOR TO THE BITUMINOUS OVERLAY ON TRUNK HIGHWAY IN 2006 THE MINNESOTA HIGHWAY DEPARTMENT ESTABLISHED COORDINATES ON THIS CORNER AND THESE AGREED WITH E.G. RUDS POSITION WITHIN 0.04 OF A FOOT.

IN FEBRUARY 2007 E.G. RUD AND SONS SET A P.K. IN THE NEW BITUMINOUS AND TOOK NEW TIES.