

CERTIFICATE OF LOCATION OF GOVERNMENT CORNER

NORTH QUARTER Corner of Section 34, Township 40, Range 25, 4TH P.M.

STATE OF MINNESOTA, County of KANABEC

At the corner location shown on the sketch:
On 10/ /2003 Set a Kanabec County Monument.

Kanabec County U.S. Survey Feet Coordinates
NAD 1983, HARN 1996 Adjustment
Obtained by RTK GPS Observation

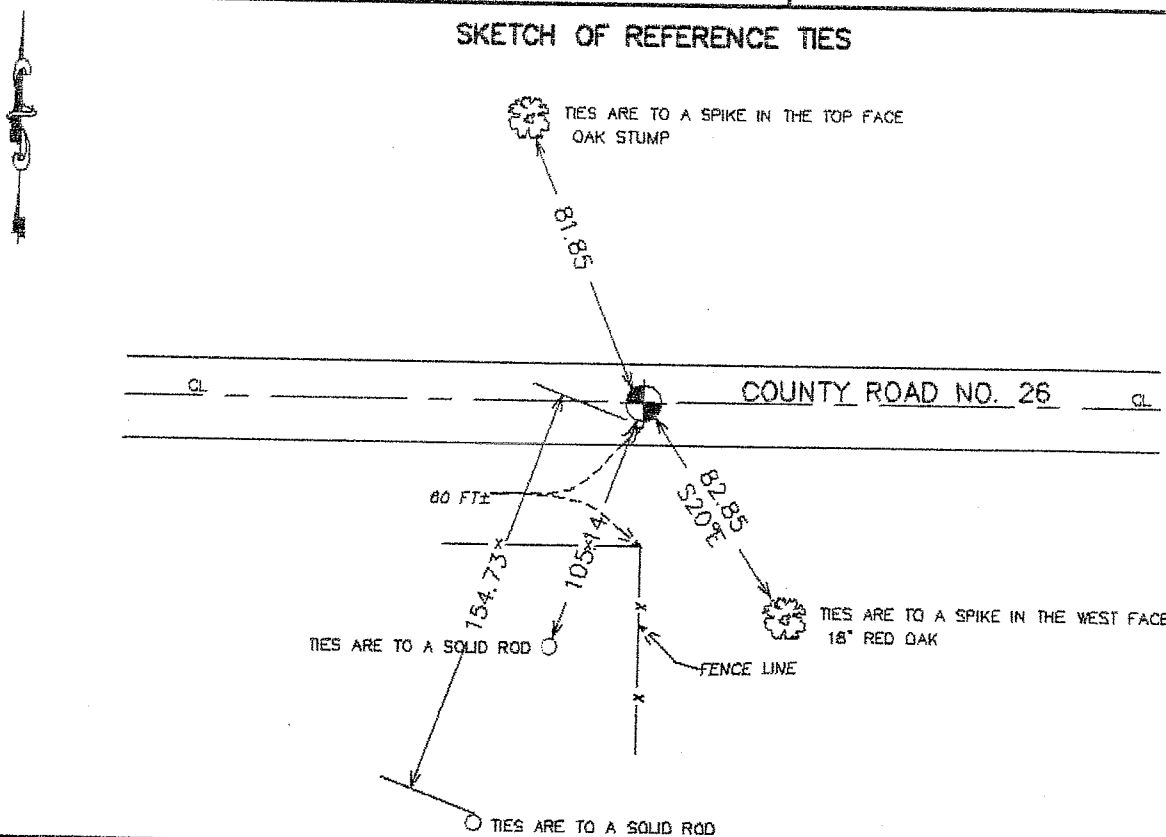
Northing= 169799.246

Easting= 361792.255

Note: NAD 1983, HARN 1996 Adjustment
coordinates are NOT compatible with
NAD 1983 coordinates

Note: 1 Meter=3937/1200 U.S. Survey Feet

SKETCH OF REFERENCE TIES



Statement of evidence relative to this corner location is on back of page.

I hereby certify that this document and the data contained herein was prepared by me or under my direct supervision.

Ernest Alud
Signature

1-31-2004
Date

Registration No. 9808

Land Surveyor, Professional Engineer

County Surveyor, County Engineer

OFFICE OF THE COUNTY RECORDER

County of _____

I hereby certify that this document was filed in the County Recorder's office at _____ M. on the _____ day of _____ A.D., 20____

County Recorder _____

BY _____ Deputy

DOCUMENT NO. _____

STATEMENT OF EVIDENCE

(from tie sheet no. 964)

All of the original bearing trees are now gone.

In 1905, J.B. Vickory made a survey along the north line of Sections 31-34, Township 40, Range 25, for a four rod road, per the Town Road Order on record at the County Auditor's Office.

In July of 1993, we made a survey along the north line of Sections 34, Township 40, Range 25, to locate existing monuments, lines of occupation and establish search areas. There is a fence line running south from this corner and a road running east and west.

On May 19, 1998, we made a 6 foot by 12 foot by 12 foot excavation with a backhoe. No evidence of the corner was found in the excavation.

The centerline of the existing east-west road and fence line south extended north was accepted as the best available evidence of the original corner location.

In October of 2003 at the request of the Kanabec County Highway Department we reset this corner from construction ties and established Kanabec County coordinates on this monument.