

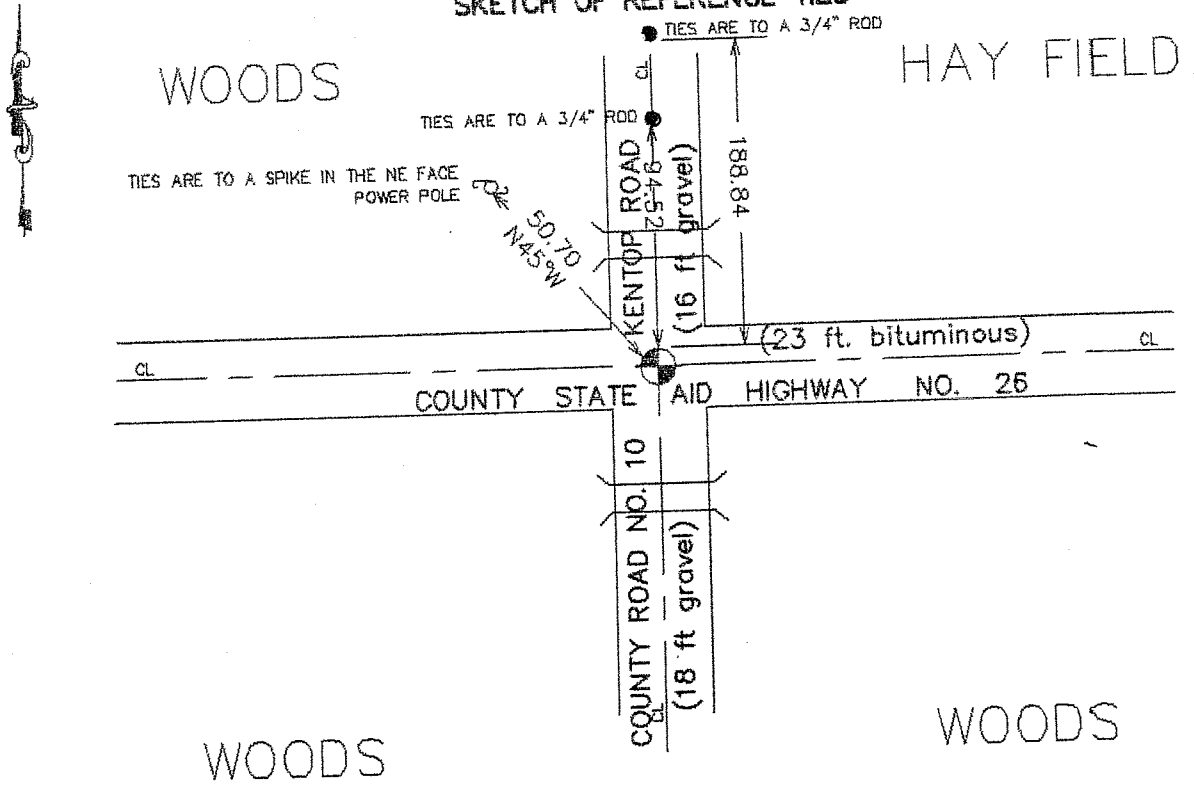
# CERTIFICATE OF LOCATION OF GOVERNMENT CORNER

NORTHEAST Corner of Section 32, Township 40, Range 25, 4TH P.M.  
 STATE OF MINNESOTA, County of KANABEC

At the corner location shown on the sketch:  
 On 10/ /2003 Set a Kanabec County Monument.

Kanabec County U.S. Survey Feet Coordinates  
 NAD 1983, HARN 1996 Adjustment  
 Obtained by RTK GPS Observation  
 Northing= 170367.184  
 Easting= 353570.413  
 Note: NAD 1983, HARN 1996 Adjustment  
 coordinates are NOT compatible with  
 NAD 1983 coordinates  
 Note: 1 Meter=3937/1200 U.S. Survey Feet

### SKETCH OF REFERENCE TIES



Statement of evidence relative to this corner location is on back of page.

I hereby certify that this document and the data contained herein was prepared by me or under my direct supervision.

Ernest J. Reed 1-31-2004  
 Signature Date

Registration No. 9800

- Land Surveyor,  Professional Engineer  
 County Surveyor,  County Engineer

### OFFICE OF THE COUNTY RECORDER

County of \_\_\_\_\_  
 I hereby certify that this document was filed in the County Recorder's office at \_\_\_\_\_ M. on the \_\_\_\_\_ day of \_\_\_\_\_ A.D., 20\_\_\_\_

County Recorder \_\_\_\_\_  
 BY \_\_\_\_\_ Deputy

DOCUMENT NO. \_\_\_\_\_

STATEMENT OF EVIDENCE  
(FROM TIE SHEET 817)

The Northeast corner of Section 32 was originally set in 1855 by Silas Barnard, Deputy Surveyor. A post was placed and witness trees established. No remains of the post or witness trees found.

I placed a cast iron monument at the centerline - centerline intersection as shown. This occupation fits well with the occupation lines along the North and East lines of Section 32 and has been accepted as the subject corner by the local residents.

On October 30, 1991 at the request of the Kanabec County Surveyor we excavated at the subject corner in an area of 5 feet East, 3 feet West, 3 feet North, and 3 feet South of our corner position at a depth of 3 feet and found no evidence of a corner position. The cast iron monument was replaced July 21, 1993.

In October 2003 at the request of the Kanabec County Highway Department we reset the Northeast corner of Section 32, Township 40, Range 25 from construction ties and established Kanabec County coordinates on this position.