

CERTIFICATE OF LOCATION OF GOVERNMENT CORNER

NORTHEAST Corner of Section 30, Township 40, Range 25, 4TH P.M.

STATE OF MINNESOTA, County of KANABEC

At the corner location shown on the sketch:

SET A KANABEC COUNTY MONUMENT

Kanabec County U.S. Survey Feet Coordinates
NAD 1983, HARN 1996 Adjustment
Obtained by RTK GPS Observation

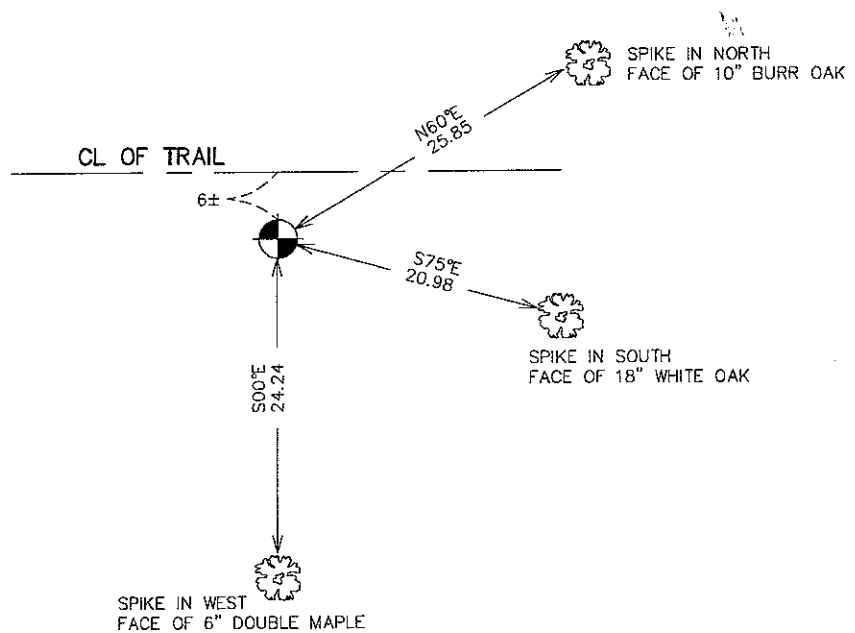
Northing= 175758.51

Easting= 348154.35

Note: NAD 1983, HARN 1996 Adjustment
coordinates are NOT compatible with
NAD 1983 coordinates

Note: 1 Meter=3937/1200 U.S. Survey Feet

SKETCH OF REFERENCE TIES



Statement of evidence relative to this corner location is on back of page.

I hereby certify that this document and the data contained herein was prepared by me or under my direct supervision.

Signature Date

Registration No. _____

Land Surveyor, Professional Engineer

County Surveyor, County Engineer

OFFICE OF THE COUNTY RECORDER

County of _____

I hereby certify that this document was filed in the County Recorder's office at _____ M. on the

_____ day of _____ A.D., 20____

County Recorder _____

BY _____ Deputy

DOCUMENT NO. _____

N 1/4 CORNER, SEC. 29, T40, R25

STATEMENT OF EVIDENCE

THE ORIGINAL GOVERNMENT POST WAS SET BY DEPUTY SURVEYOR SILAS BARNARD ON NOVEMBER 11, 1855 AND 4 BEARING TREES WERE NOTED:

24" PINE, S40°W @ 25 LINKS

10" YELLOW BIRCH, S49° E @ 15 LINKS

10" BLACK ASH, N39°E @ 15 LINKS

8" BASSWOOD, N51%%W @ 15 LINKS

NO VISIBLE EVIDENCE REMAINS FOR THE ORIGINAL POST OR BEARING TREES.

NO RECORDS OF ANY SUBSEQUENT SURVEYS COULD BE FOUND AT THE KANABEC COUNTY OFFICES.

THERE IS A VERY GOOD FENCE ON THE EAST LINE OF SEC. 30 WHICH DUANE WEBER TESTIFIED HAD BEEN PERPETUATED FOR SEVERAL YEARS. THIS FENCE RUNS FROM THE SE CORNER OF SEC. 30 NORTHERLY FOR 3/4 OF A MILE. WE EXTENDED THIS FENCE LINE TO THE NORTH TO ITS INTERSECTION WITH A LINE RUN FROM THE NE CORNER OF SEC. 29 TO THE NW CORNER OF SEC. 30. THIS FELL ON A MINIMUM MAINTENANCE TRAIL AND 30 FEET WEST OF A PRO-RATED DISTANCE FROM THE NE CORNER OF SEC. 29 TO THE NW CORNER OF SEC. 30.

WE ACCEPTED THIS AS THE BEST LOCATION FOR THE POSITION OF THIS CORNER. A KANABEC COUNTY MONUMENT WAS SET, TIES TAKEN AND KANABEC COUNTY COORDINATES ESTABLISHED ON THIS POSITION.